

HEATING



FAN COIL - HYDRONIC TERMINALS



THERMAL COMFORT FOR ALL SEASONS, IN A SINGLE DEVICE

Hokkaido FAN COIL terminals are cutting-edge products in terms of design, performance, quiet, consumption and functionality. They are perfect for all environments that need to be air conditioned, by heating or cooling, 365 days a year, 24 hours a day. Their versatility and ability to maintain indoor comfort make them products that can be installed both in homes and in other spaces such as offices, hotels, hospitals, airports, libraries, museums, archives, warehouses and basements.

BRUSHLESS MOTOR

Hokkaido FAN COILS are new energy-saving products with advanced DC technology.

These fan coils feature high energy efficiency, low noise operation and precise temperature control.

They are ideal for hospitals, offices, hotels, airports and various other applications.



DC Inverter motor

STANDARD INFRA-RED REMOTE CONTROL



4-way 84x84 cassette



4-way 60x60 cassette Wall

Individual control

- Operating mode and temperature control.
- Speed control.
- Louver control.

THE DC BRUSHLESS FAN MOTOR IS THE TECHNOLOGICAL HEART OF THE HOKKAIDO FAN COIL RANGE

- High energy efficiency.
- Economic savings.
- Significant reduction in energy consumption compared to traditional fan coils with AC motor.
- Reduced CO2 emissions.

QUIET

The noise of the unit is 2-5 dB (A) lower than that of a fan coil unit with an AC motor, keeping the living environment quiet.



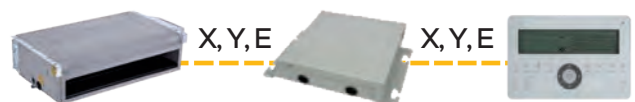
CENTRALIZED CONTROL FOR ALL TYPES OF FAN COILS

DHC TRKF-M



Centralized control

- LCD display.
- Soft touch buttons.
- Operating mode and temperature control.
- Speed control (high/medium/low).
- Daily on/off timer.
- Manages up to 64 fan coils.









HEATING

.....

FAN COIL - HYDRONIC TERMINALS

NEW

		models	250	300	500	600	700	750	800	950	1000	1200	1500
Cassette	compact 60x60	 HTFMM W		●	●								
	84x84	 HTBMM W						●		●		●	●
Ducted		 HRDMM W			●				●		●	●	
Wall		 HKEMM W	●		●	●							
Floor/ceiling	exposed	 HFLMM W			●		●		●				
	recessed	 HFYMM W			●		●		●				

OPTIONAL WIRE CONTROLS FOR FLOOR/CEILING AND DUCTED MODELS

The exposed, recessed and ducted floor/ceiling models allow the use of two optional wire control models (simplified or with MODBUS).

DHW FLY-RD-M



Individual control

- LCD display.
- Operating mode and temperature control.
- Speed control (7 levels).

DHWM FLY-RD-M



Individual control with MODBUS

- LCD display.
- Operating mode and temperature control.
- Speed control.
- Daily on/off timer.
- Eco mode.
- Compatible with MODBUS systems.

HEATING - FAN COIL - HYDRONIC TERMINALS

NEW

Compact cassette 60x60

HTFMM 300-500 W



Standard 8-way 360° panel

Compact dimensions: (261 mm height)

Condensate drain pump included

Pre-cut for outside air inflow

Remote control included

Model			HTFMM 300 W		HTFMM 500 W	
Power supply		V/Ph/Hz	220-240/1/50			
Air flow (H/M/L) ¹		m ³ /h	535/429/322		781/611/494	
Cooling ²	Power (H/M/L)	kW	2.98/2.53/2.00		4.2/3.48/3.01	
	Water flow (H/M/L)	m ³ /h	0.53/0.45/0.35		0.75/0.61/0.54	
	Water load loss (H/M/L)	kPa	10/7/5		12.32/8.62/7.4	
Water heating 45° C ³	Power (H/M/L)	kW	2.61/2.31/2.24		4.95/3.99/3.26	
	Water flow (H/M/L)	m ³ /h	0.64/0.54/0.42		0.87/0.70/0.58	
	Water load loss (H/M/L)	kPa	12.1/8.5/5.3		9.4/8.23/6.1	
Water heating 55° C ⁴	Power (H/M/L)	kW	4.01/3.35/2.61		5.76/4.69/3.84	
	Water flow (H/M/L)	m ³ /h	0.53/0.45/0.35		0.75/0.61/0.54	
	Water load loss (H/M/L)	kPa	8.2/6/3.8		11.41/6.5/5.41	
Electrical absorption (H)	W	15		33		
Sound pressure (H/M/L) ⁶	dB(A)	39/33/27		43/38/32		
Fan motor	Type	DC Brushless				
	Quantity	1				
Fan	Type	Centrifugal with forward curved blades				
	Quantity	1		1		
Coil	Rows	2		2		
	Maximum pressure	Pa	1.6			
Panel	Net dimensions (LxHxD)	mm	647x50x647		647x50x647	
	Net weight	kg	2.5		2.5	
	Gross weight	kg	4.5		4.5	
Cassette Body	Net dimensions (LxHxD)	mm	575x261x575		575x261x575	
	Net weight	kg	16.5		16.5	
	Gross weight	kg	22.5		22.5	
Hydraulic connections				G3/4		
Drain	mm			OD 25		

Cassette 84x84

HTBMM 750-950-1200-1500 W



Condensate drain pump included

Pre-cut for outside air inflow

Remote control included

Model			HTBMM 750 W		HTBMM 950 W		HTBMM 1200 W		HTBMM 1500 W	
Power supply		V/Ph/Hz	220-240/1/50							
Air flow (H/M/L) ¹		m ³ /h	1229/1020/810		1530/1224/1101		1581/1371/1236		1871/1415/1198	
Cooling ²	Power (H/M/L)	kW	6.12/5.45/4.60		7.84/6.84/6.35		7.87/7.12/6.67		11.19/8.82/7.48	
	Water flow (H/M/L)	m ³ /h	1.10/0.96/0.81		1.43/1.24/1.13		1.44/1.28/1.22		1.96/1.53/1.28	
	Water load loss (H/M/L)	kPa	21.3/21.3/12.4		22/17/14.1		22.3/18.1/16.3		36.6/22.7/16.4	
Water heating 45° C ³	Power (H/M/L)	kW	6.27/5.88/5.43		8.49/8/7.35		9.16/8.54/7.90		10.07/9.37/8.68	
	Water flow (H/M/L)	m ³ /h	1.39/1.20/1.00		1.71/1.45/1.33		1.73/1.57/1.46		2.35/1.86/1.59	
	Water load loss (H/M/L)	kPa	30/22.7/16.3		28.1/20.7/17.4		28.8/24.0/20.7		49.2/31.2/23.3	
Water heating 55° C ⁴	Power (H/M/L)	kW	8.62/7.49/6.27		10.86/9.24/8.49		10.92/9.84/9.16		14.92/11.73/10.07	
	Water flow (H/M/L)	m ³ /h	1.10/0.96/0.81		1.43/1.24/1.13		1.44/1.28/1.22		1.96/1.53/1.28	
	Water load loss (H/M/L)	kPa	19.1/14.8/10.6		19.9/15.2/12.6		20.0/16.2/14.7		34.3/21.3/15.0	
Electrical absorption (H)	W	49		76		85		127		
Sound pressure (H/M/L) ⁶	dB(A)	44/40/34		46/42/39		48/44/41		49/43/39		
Fan motor	Type	DC Brushless								
	Quantity	1								
Fan	Type	Centrifugal with forward curved blades								
	Quantity	1		1		1		1		
Coil	Rows	2		2		2		3		
	Maximum pressure	Pa	1.6							
Panel	Net dimensions (LxHxD)	mm	950x45x950		950x45x950		950x45x950		950x45x950	
	Net weight	kg	6		6		6		6	
	Gross weight	kg	9		9		9		9	
Cassette Body	Net dimensions (LxHxD)	mm	840x300x840		840x300x840		840x300x840		840x300x840	
	Net weight	kg	23		27		27		29.5	
	Gross weight	kg	28		33		33		34.5	
Hydraulic connections								G3/4		
Drain	mm							OD 32		

NOTES (1) H: High speed; M: Medium speed; L: Low speed - Useful static pressure recessed version: 12 Pa. (2) Cooling conditions: water in 7° C/ΔT 5° C; air in 27° C DB/19° C WB. (3) Heating conditions: water in 45° C, ΔT 5° C; air in 20° C DB. (4) Heating conditions: water in 55° C, ΔT 5° C; air in 20° C DB. (5) Heating conditions: water in 70° C, ΔT 10° C; air in 20° C DB. (6) Noise level tested in a semi-anechoic chamber, distance 1 m.

HEATING - FAN COIL - HYDRONIC TERMINALS

NEW

Ducted up to 50 Pa

HRDMM 500-800-1000-1200 W



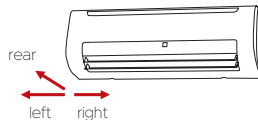
Pre-cut for outside air inflow

Model		HRDMM 500 W	HRDMM 800 W	HRDMM 1000 W	HRDMM 1200 W
Power supply	V/Ph/Hz	220-240/1/50			
Air flow (H/M/L) ¹	m ³ /h	887/620/443	1492/1071/797	1824/1332/906	2327/1669/1135
Static pressure	Pa	12 Pa (default); 30/50 Pa settable via switch on PCB			
Cooling ²	Power (H/M/L)	3.83/3.16/2.55	6.7/5.49/4.45	7.92/6.62/5.15	9.83/8.5/6.46
	Water flow (H/M/L)	0.68/0.56/0.46	1.19/0.96/0.80	1.43/1.17/0.91	1.74/1.42/1.12
	Water load loss (H/M/L)	23.7/17.1/11.9	15.1/10.89/7.82	23.2/16.44/10.94	50.33/30.4/21.71
Water heating 45° C ³	Power (H/M/L)	4.84/3.9/3.01	8.39/6.64/5.2	9.92/7.94/5.86	12.58/10.24/7.57
	Water flow (H/M/L)	0.84/0.69/0.53	1.46/1.17/0.91	1.69/1.38/1.01	2.17/1.79/1.34
	Water load loss (H/M/L)	30.8/32.4/20	13.26/13.1/8.28	19.72/18.87/11.07	38.30/41.81/26.5
Water heating 55° C ⁴	Power (H/M/L)	5.6/4.49/3.45	9.87/7.83/6.29	11.63/9.37/6.96	14.58/11.82/8.83
	Water flow (H/M/L)	0.68/0.56/0.46	1.19/0.96/0.80	1.43/1.17/0.91	1.74/1.42/1.12
	Water load loss (H/M/L)	29.04/14.16/9.71	19.36/9.03/6.4	26.68/13.96/9.1	60.7/26.5/17.8
Electrical absorption (H)	W	45	66	100	119
Sound pressure (H/M/L) ⁶	dB(A)	44.6/36.8/29.4	47.7/39.4/31.1	50.2/43.0/33.0	50.9/44.0/33.8
Fan motor	Type	DC Brushless			
	Quantity	2			
Fan	Type	Centrifugal with forward curved blades			
	Quantity	2	4	4	4
Coil	Rows	2	2	2	2
	Maximum pressure	Pa	1.6		
Product specifications	Net dimensions (LxHxD)	941x241x522	1461x241x522	1566x241x522	1856x241x522
	Net weight	20	31.4	32.5	37.5
	Gross weight	23.2	35.8	37.2	42.8
Hydraulic connections	"	G3/4			
Drain	mm	OD 25			

Wall

HKEMM 250-500-600 W

Multi-directional piping outlet



Positioning of motorized louvers
Removable front panel

Remote control included

Model		HKEMM 250 W	HKEMM 500 W	HKEMM 600 W
Power supply	V/Ph/Hz	220-240/1/50		
Air flow (H/M/L) ¹	m ³ /h	492/454/400	862/741/634	979/849/717
Cooling ²	Power (H/M/L)	2.7/2.59/2.39	4.47/3.98/3.48	4.87/4.26/3.79
	Water flow (H/M/L)	0.48/0.46/0.42	0.77/0.68/0.61	0.85/0.72/0.65
	Water load loss (H/M/L)	31.61/28.63/25.36	41.17/33.54/27.05	50.68/39/47/33.66
Water heating 45° C ³	Power (H/M/L)	2.94/2.8/2.58	4.84/4.23/3.62	5.26/4.68/3.96
	Water flow (H/M/L)	0.51/0.49/0.46	0.84/0.73/0.64	0.89/0.80/0.68
	Water load loss (H/M/L)	32.66/34.89/30.24	36.82/33.83/26.26	47.12/42.75/32.95
Water heating 55° C ⁴	Power (H/M/L)	3.29/3.03/2.63	5.68/4.94/4.24	6.31/5.57/4.77
	Water flow (H/M/L)	0.48/0.46/0.42	0.77/0.68/0.61	0.85/0.72/0.65
	Water load loss (H/M/L)	37.49/30.25/26.53	43.74/29.69/23.98	51.65/36.3/30.3
Electrical absorption (H)	W	13	26	38
Sound pressure (H/M/L) ⁶	dB(A)	32/30/27	38/34/30	44/40/35
Fan motor	Type	DC Brushless		
	Quantity	1		
Fan	Type	Tangential		
	Quantity	1	1	1
Batteria	Ranghi	2	2	2
	Massima pressione	Mpa	1.6	
Product specifications	Net dimensions (LxHxD)	915x290x230	1072x315x230	1072x315x230
	Packaging dimensions	1020x390x315	1180x415x315	1180x415x315
	Net weight	12.7	15.1	14.9
	Gross weight	17.3	19	18.6
Hydraulic connections	"	G3/4		
Drain	mm	OD 20		

NOTES (1) H: High speed; M: Medium speed; L: Low speed - Useful static pressure recessed version: 12 Pa. (2) Cooling conditions: water in 7° C/ΔT 5° C; air in 27° C DB/19° C WB. (3) Heating conditions: water in 45° C, ΔT 5° C; air in 20° C DB. (4) Heating conditions: water in 55° C, ΔT 5° C; air in 20° C DB. (5) Heating conditions: water in 70° C, ΔT 10° C; air in 20° C DB. (6) Noise level tested in a semi-anechoic chamber, distance 1 m.

HEATING - FAN COIL - HYDRONIC TERMINALS

NEW

Exposed floor/ceiling

HFLMM 501-701-801 W



Vertical or horizontal installation

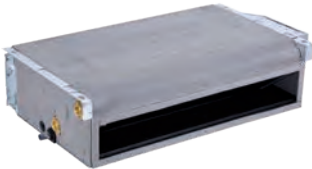
Compact dimensions: (200 mm deep)

Elegant design

Model			HFLMM 501 W	HFLMM 701 W	HFLMM 801 W
Power supply		V/Ph/Hz	220-240/1/50		
Air flow (H/M/L) ¹		m ³ /h	790/580/410	1190/855/505	1360/1015/685
Cooling ²	Power (H/M/L)	kW	4.30/3.48/2.71	5.60/4.47/3.14	7.35/6.12/4.57
	Water flow (H/M/L)	m ³ /h	0.74/0.60/0.47	0.96/0.77/0.54	1.27/1.05/0.79
	Water load loss (H/M/L)	kPa	54.2/36.22/22.78	50.7/33.38/17.73	44.1/33.7/19.41
Water heating 45° C ³	Power (H/M/L)	kW	4.70/3.70/2.81	6.00/4.77/3.36	8.05/6.46/4.71
	Water flow (H/M/L)	m ³ /h	0.81/0.64/0.48	1.04/0.83/0.59	1.39/1.12/0.82
	Water load loss (H/M/L)	kPa	54.3/36.87/22.32	55.5/37.66/19.27	46.9/31.9/18.16
Electrical absorption (H)		W	50	96	113
Sound pressure (H/M/L) ⁶		dB(A)	59/51/43	64/56/45	63/58/49
Fan motor	Type	DC Brushless			
	Quantity	1			
Fan	Type	Centrifugal with forward curved blades			
	Quantity	2	3	3	
Coil	Rows	3	3	3	
	Maximum pressure	Pa	1.6		
Product specifications	Net dimensions (LxHxD)	mm	1240x495x200	1360x495x200	1360x591x200
	Net weight	kg	25.5	28.5	32.5
	Gross weight	kg	32.5	36	41
Hydraulic connections			G3/4		
Drain		mm	OD 18.5		

Recessed floor/ceiling

HFYMM 501-701-801 W



Vertical or horizontal installation

Compact dimensions: (200 mm deep)

Model			HFYMM 501 W	HFYMM 701 W	HFYMM 801 W
Power supply		V/Ph/Hz	220-240/1/50		
Air flow (H/M/L) ¹		m ³ /h	790/580/410	1190/855/505	1360/1015/685
Cooling ²	Power (H/M/L)	kW	4.30/3.48/2.71	5.60/4.47/3.14	7.35/6.12/4.57
	Water flow (H/M/L)	m ³ /h	0.74/0.60/0.47	0.96/0.77/0.54	1.27/1.05/0.79
	Water load loss (H/M/L)	kPa	54.2/36.22/22.78	50.7/33.38/17.73	44.1/33.7/19.41
Water heating 45° C ³	Power (H/M/L)	kW	4.70/3.70/2.81	6.00/4.77/3.36	8.05/6.46/4.71
	Water flow (H/M/L)	m ³ /h	0.81/0.64/0.48	1.04/0.83/0.59	1.39/1.12/0.82
	Water load loss (H/M/L)	kPa	54.3/36.87/22.32	55.5/37.66/19.27	46.9/31.9/18.16
Electrical absorption (H)		W	50	96	113
Sound pressure (H/M/L) ⁶		dB(A)	59/51/43	64/56/45	63/58/49
Fan motor	Type	DC Brushless			
	Quantity	1			
Fan	Type	Centrifugal with forward curved blades			
	Quantity	2	3	3	
Coil	Rows	3	3	3	
	Maximum pressure	Pa	1.6		
Product specifications	Net dimensions (LxHxD)	mm	1087x455x200	1207x455x200	1207x550x200
	Net weight	kg	17.3	19.6	23.1
	Gross weight	kg	24	26.4	30.2
Hydraulic connections			G3/4		
Drain		mm	OD 18.5		

NOTES (1) H: High speed; M: Medium speed; L: Low speed - Useful static pressure recessed version: 12 Pa. (2) Cooling conditions: water in 7° C/ΔT 5° C; air in 27° C DB/19° C WB. (3) Heating conditions: water in 45° C, ΔT 5° C; air in 20° C DB. (4) Heating conditions: water in 55° C, ΔT 5° C; air in 20° C DB. (5) Heating conditions: water in 70° C, ΔT 10° C; air in 20° C DB. (6) Noise level tested in a semi-anechoic chamber, distance 1 m.